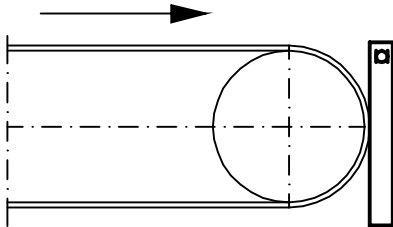


Installation Front Cleaner

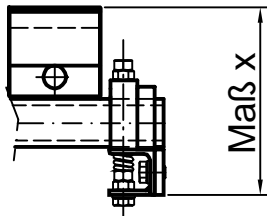
1. First of all you have to fix the centre of the drum.
As an optimum means of measurement you are advised to use a spirit level.



Please use the spirit level in the way that the bubble is in the centre of the upper level.

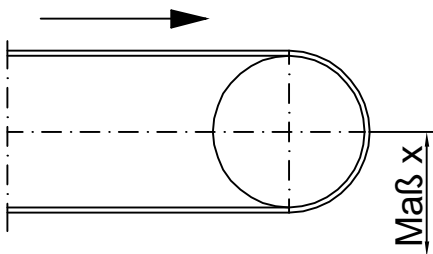
Please mark the point of label on the drum.

2. Please measure the complete height of the scraper.



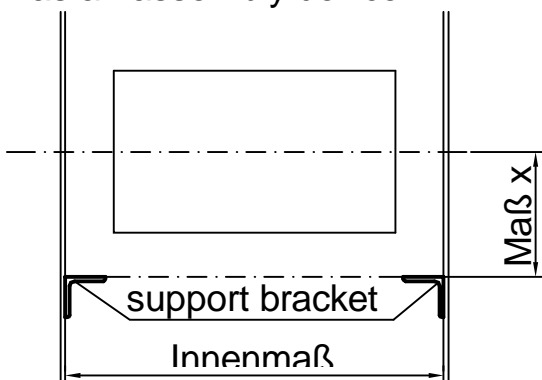
Upper edge - hard metal - lower flange - holding device

3. Please transmit the measure X to the previously marked drum.



Please mark the measure X at the inner wall of the chute.

4. A support bracket is fitted at the right and left sides of the chutes as an assembly device.



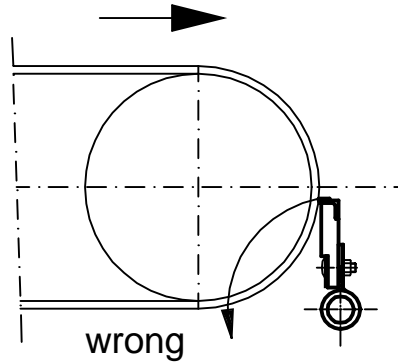
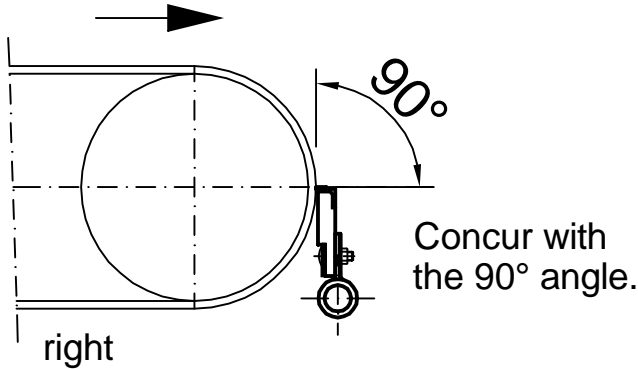
5. Please cut the support tube according to the inner measure reduced by 20 mm.

6. Put the bracket on the end of the support tube.
Please set the complete scraper on the auxiliary angle.

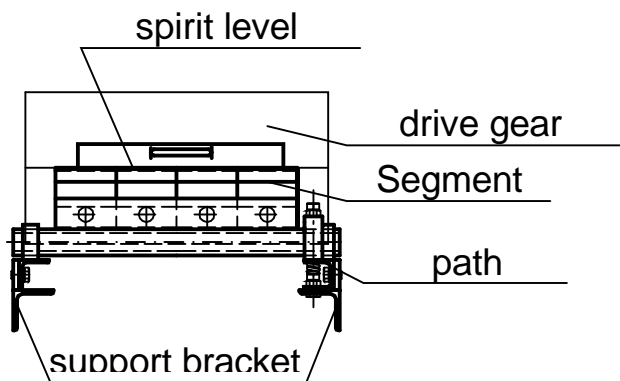
7. Please align the drum scraper so that all the segments lie close to the drum.

Attention!! Please always take care, that the cutting edge of hard metal lies

In case that the installation is realized too low, the scraper rebounds and causes a damage.



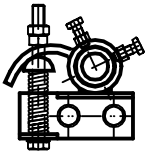
- 8.



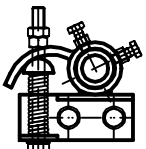
Please control with help of the spirit level whether the scraper is in a horizontal position.

9. When it is secured, that the scraper is aligned according to position 7 + 8 weld the brackets at the chutes (construction, chute)

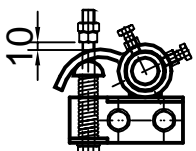
10. Stretching the pressure spring



Please align the scraper close to the drum



Please press the pressure spring by means of a nut and then torque the tube set screws. Now the tube is tightened.



Then loose the nut so that the distance between lever arm and nut comes to a minimum of 10 mm.
Then secure them with the check nuts.

The pressure spring allows the scraper to be constantly in contact with the drum.
A trial run should always take place in order to ensure that the scraper runs without any problems.